

WHEELS/ROLLERS & GUIDES

QUICK LOCATOR GUIDE

Roller Guide Assemblies

10" OD	492
7-7/8" OD	492
6-1/2" OD	492
6" OD	492
5-3/4" OD	492
4.92" OD	493
4-1/2" OD	493
3-3/4" OD	493
3-1/4" OD	493
3.156" OD	493
3" OD	493
2.98" (76MM) OD	493
Cover Plates	494

Guide Rollers

10-1/4" OD	495
10" OD	495
8" OD	495
7-7/8" OD	495
7-3/4" OD	495
7" OD	495-496
6-1/2" OD	496
6-5/16" OD	496
6" OD	496-497
5.91" OD	497
5.875" OD	497
5-3/4" OD	497
5" OD	497
4.92" OD	497
4-7/8" OD	497-498
4-1/2" OD	498
4.48" OD	498
4-3/8" OD	498
4" OD	498
3.94" OD	498

3-15/16" OD	498
3.82" OD	498
3-3/4" OD	498
3-1/2" OD	498-499
3-3/8" OD	499
3-1/4" OD	499
3.16" OD	499
2.36" OD	499
3.15" OD	499-500
3-1/8" OD	500
3.132" OD	500
3" OD	500
2-7/8" OD	500
2-3/4" OD	500
2-5/8" OD	500
2-9/16" OD	500
2-1/2" OD	500

Hanger Assemblies

4-3/8" OD	502
4-14" OD	502
3-3/8" OD	502
3-1/4" OD	502
3-5/16" OD	502
2-7/8" OD	502
2-3/4" OD	502
2-1/4" OD	503

Hanger Rollers

5.12" OD	505
4-3/8" OD	505
4-1/4" OD	505
3.812" OD	505
3.7" OD	505
3-11/16" OD	505
3.54" OD	505

3.39" OD	505
3-3/8" OD	505-506
3-5/16" OD	506
3-1/4" OD	506-507
3.25" OD	507
3.135" OD	508
3" OD	508
2.95" OD	508
2.91" OD	508
2-7/8" OD	508
2.83" OD	508
2.76" OD	508
2-3/4" OD	508
2.68" OD	508
2-5/8" OD	508
2.56" OD	508
2-1/2" OD	509
2.44" OD	509
2.35" OD	509
2-1/4" OD	509
2.2" OD	509
2.19" OD	509
2.13" OD	509
2" OD	509
1.98" OD	509
1.89" OD	509
1.8" OD	509
1.73" OD	509
1.69" OD	509
1.42" OD	509

Bearings

Bearings	510
----------	-----

Slide Guides

Slide Guides	510
--------------	-----

Miscellaneous Rollers

Misc. Rollers	501
---------------	-----



Roller Guides

Roller Guide Assemblies

S.E.E.S. #	O.E.M. #	Description
KOGS-9A	KM600655G03	Roller Guide Assembly, 5.91" x 1.5" (150mmx 38mm x 2mm) 6003 ID:17mm
MW-11A	P28305	Roller Guide Assembly, 10" wheels with poly tire, 3-wheel
MW-11AK	P28305	Roller Guide Assembly, 10" 3 wheel replacement to P28305, includes URG-004 and MW-11B
MW-11B		Adapter Plate, for URG-004
OW-10D	B261AM3	Roller Guide Assembly, 10" O.D. for #1 Rail, Top
OW-10E	B261AM4	Roller Guide Assembly, 10" O.D. for #1 Rail, Bottom
OW-10F	B261AM5	Roller Guide Assembly, 10" O.D. for #1/2 Rail, Top
OW-10G	B261AM6	Roller Guide Assembly, 10" O.D. for #1/2 Rail, Bottom
OW-10H	B6261AM1	Roller Guide Assembly, 10" O.D. for #3/4 Rail, Top
OW-10K	B261AM7	Roller Guide Assembly, 10" O.D. for #0A Rail, Top
OW-10L	B261AM8	Roller Guide Assembly, 10" O.D. for #0A Rail, Bottom
OW-7E	6261C1	Roller Guide assembly, 7-7/8" O.D. for #1 & #1-1/2 Rail, Top
OW-7F	6261C4	Roller Guide assembly, 7-7/8" O.D. for #1 & #1-1/2 Rail, Bottom
OW-7K	F6261C2	Roller Guide Assembly, 7-7/8" O.D. for #3/4 Rail, Top
OW-7L	F6261C5	Roller Guide Assembly, 7-7/8" O.D. for #3/4 Rail, Bottom
OW-7M	F6261C3	Roller Guide Assy, counterweight, 7-7/8" O.D. for #1 and #1-1/2 Rail, Top
MW-6AK	P25220	Roller Guide assembly, 6-1/2" 3-wheel
WRG-001	627D989G08	Roller Guide assembly, 6" , 5-18 lb rail
WRG-004	627D989G05	Roller Guide assembly, 6" CVT Rail 5219D47G0
HWRG-002	378	Roller Guide assembly, 6" diameter 3-Wheel
URG-002	P25220	Roller Guide assembly, 6" universal 3-wheel, Type B
URG-004		Roller Guide assembly, 10" universal 3-wheel
URG-006		Roller Guide assembly, 6-wheel 3-1/4" trolley roller guide Type C
URG-007	33SRG	Roller Guide assembly, 3-1/4" , 3-Wheel, Adjustable Spring Roller guide, sold individually
URG-002H		Roller Guide Assy, 3 Wheel, 6" O.D. Model B, with 90Duro Wheel
URG-002N	Model B	Roller Guide assembly, 3 Wheel, 6" O.D. Model B, with Neoprene Rollers
URG-005-SRB		Rebuild Kit, for URG-005 Adjusting Hub & Spring
URG-R3		Roller Guide assembly, 5.92" O.D and 3.87" O.D.
URG-R6		Roller Guide assembly, 5.88" O.D.
URG-009	36SRG	Roller Guide assembly, 5-3/4" , 3-Wheel, Adjustable Spring Roller guide, sold individual
URG-010	815RG	Roller Guide assembly, 5-3/4" , 3-Wheel, Adjustable Roller guide, sold individually



URG-004



MW-11A



MW-11B



WRG-001



WRG-004

HWRG-002



URG-002



URG-009



URG-007



URG-010



■ Cover Plates available. See page 494.

Features

- **Long Lasting** Polyurethane Rollers
- **Strong** cast iron base and roller arms
- Adjustable tensioning springs for light load or heavy load applications
- Offering a superior **SMOOTH** ride for passengers

Roller Guide Assemblies

S.E.E.S. #	O.E.M. #	Description
OW-30A	KAA25830A1	Roller Guide assembly, 4.92" O.D., Top for 2 & 1-1/2# Rail, Each, 3-Wheel
OW-30B	KAA25830A2	Roller Guide assembly, 4.92" O.D., Bottom for 2 & 1-1/2# Rail, Each, 3-Wheel
OW-30C	KAA25830A3	Roller Guide assembly, 4.92" O.D., Set of 4 for 2 & 1-1/2# Rail
WRG-003	627D989G03	Roller Guide assembly, 4.5" & 6" roller 8-16# CWT Rail, 3-Wheel
WRG-007	627D989G04	Roller Guide assembly, 4.5" & 6" roller 18.5# CWT Rail, 3-Wheel
OW-9A	6261P1	Roller Guide assembly, 3-3/4" O.D., with three OW-9 rollers
MIS-188J		Roller Guide assembly, 3-3/4" O.D. x 5/8" Face 1-1/4" W, (2) 99502H (5/8" Bore)
URG-001		Roller Guide assembly, 3-1/4" universal 3-wheel, Type D
URG-001N	Model D	Roller Guide assembly, 3 W, 3-1/4" O.D. Type D, Neoprene Rollers
URG-008	803RG	Roller Guide assembly, 3-1/4", 3-Wheel, Adjustable Roller guide, sold individually
HWRG-001	377	Roller Guide assembly, 3-1/4" diameter 3-Wheel
KOGS-7A		Roller Guide assembly, 3.156" O.D. / .625" 80mm O.D./ 16mm rail, Spring 3 wheel
KOGS-7		Roller Guide assembly, 3.15" O.D., .39" rail, 3-wheel, adjustable spring
WRG-002	465D274G01	Roller Guide assembly, 3", 3-wheel, adjustable spring, 8-16# CWT rail
WRG-005	465D274G02	Roller Guide Assembly, 3" roller 8-16# Car Rail, 3-Wheel
WRG-006	465D274G03	Roller Guide assembly, 3" roller, R9264601 Replacement, 3-Wheel
OW-9AC	KAA25830B1	Roller Guide assembly, 3" O.D., Top for 2# Rail, Each, 3-Wheel
OW-9AD	KAA25830B2	Roller Guide assembly, 3" O.D., Bottom for 2# Rail, Each, 3-Wheel
OW-9AE	KAA25830B3	Roller Guide assembly, 3" O.D., Top for 1-1/2# Rail, Each, 3-Wheel
OW-9AF	KAA25830B4	Roller Guide assembly, 3" O.D., Bottom for 1-1/2# Rail, Each, 3-Wheel
OW-9AI	AAA456YS2	Roller Guide assembly, 3" (76mm) O.D., for Roller Guide
OW-9AB	6261P1, KAA25830B5	Roller Guide assembly, New Style 2.98" (76mm) Wheel, KAA25830B5 set of 4, hardware included
OW-210	6161AA1	Roller Guide assembly, 3" Round Rail
OW-210A	384LN2	Roller Guide assembly, Guard for 616AA



WRG-003



WRG-007



OW-9A



URG-001



URG-006



URG-008



HWRG-001



WRG-002



WRG-005



WRG-006



OW-9AB



KOGS-7



SEES UNIVERSAL ROLLER GUIDE

Roller Guides

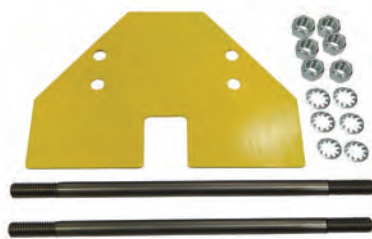
S.E.E.S. #	O.E.M. #	Description
URG-001	ED02000	3-1/4" Universal 3 wheel roller guide Model D
URG-002	EB02100	6" Universal 3 wheel roller guide Model B
URG-006	EC18400	3-1/4" Universal 6 wheel roller guide Model C

Replacement Rollers

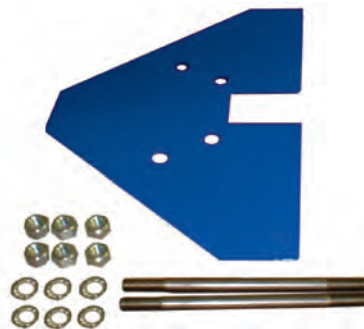
S.E.E.S. #	O.E.M. #	Description
MIS-143S	EC18405	3-1/4" diameter, .4724 bore wheel
MIS-142	EA18359	6" diameter, .7874 bore wheel

Cover Plates

S.E.E.S. #	O.E.M. #	Description
URG-001C	ED02013	Cover Plate Model D
URG-002C	EB02123	Cover Plate Model B
URG-005C	EA18333	Cover Plate Model A
URG-006C	EC18403	Cover Plate Model C
URG-001-HDW		Bolts, for Rollers, Set of 3 for URG-001



URG-001C



URG-002C

*For More Guide Roller Options, & Other Wheel and Roller Types
See Individual Catalog Sections*

Roller Guides

Guide Rollers

S.E.E.S. #	O.E.M. #	Description
WW-23	M5594G03	Roller Guide wheel , 10-1/4" dia., .6693" I.D.
URGW-004		Roller Guide wheel for URG-004, 10", bearing 6004 I.D.: .77"
NW-003	112-8001	Roller Guide wheel , Northern 10" Guide Roller, .25" Face, .9843" I.D.
MW-11	P7087	Roller Guide wheel , 10" O.D., wheel with polyurethane tire, .9843" bearing I.D. for P28305 assembly
OW-10	456CV4	Roller Guide wheel , 10" O.D. x 1-1/2" Polyurethane tire, shaft with maintenance free sealed bearing
OW-10C	456ACH1	Roller Guide Wheel , 10" O.D. x 1.5" W x .20 Face, with Shaft
HW-12	35-1159-002	Roller Guide wheel , 8" O.D. x 1-3/8" W, 1/2" W tire face, .630" bearing I.D., bushing with 5/8" dia., Hardware part # HW-12C
HW-12A	3-40329-10	Roller Guide wheel , 8" x 1-1/4", 7/8" I.D.
HW-12AH	3-40329-1	Roller Guide wheel , 8" O.D. x 3/4" Face x .787" I.D., HD 90 Duro
HW-12B	3-40119-75	Roller Guide , 10" O.D. x 1-5/16" W 3/4" Tire, Z995204 Brng
HW-12C	3-40119-75	Roller Guide , 10" O.D. x 1-5/16" W 3/4" Tire, Z995204 Brng
MIS-238	35-1159-002	Roller Guide wheel , 8" x 1-3/8", same as HW-12 but HD 95 Duro
DW-14	9831824, 63182	Roller Guide wheel , 8" O.D., .7874" I.D., two bearings
DW-14H	9831824	Roller Guide wheel , 8" O.D. x .7874" I.D., HD 90 Duro
OW-7	456CL4	Roller Guide wheel , 7-7/8" O.D. x 1-1/2" Polyurethane tire with sealed maintenance free bearing, hub extends past tire width on shaft side, after Dec. '62
OW-7H	456CL4	Roller Guide wheel , 7-7/8" O.D. x 1-1/2" W with shaft, HD 90 Duro
OW-15	456AJ2	Roller Guide wheel , 7-7/8" O.D. x 1-1/2" Polyurethane tire with sealed maintenance free bearing with shaft, hub extends past tire width on side opposite shaft, 1941 thru 1962
OW-15H	456AJ2	Roller Guide wheel , 7-7/8" O.D. x 1-1/2" W with shaft, HD 90 Duro
AW-14	168962G01, 515606	Roller Guide wheel , 7-7/8" O.D. Tire face .375" wide, Hub 1-1/2" wide, Double bearing with shaft, 2-3/4" overall length
ACLAW-003		Roller Guide wheel , 7-7/8" x 1 3/8" 200mm x 35mm w/ 6306 bearing (30mm I.D.)
MW-10	P12592	Roller guide wheel , 7-3/4" O.D., .9843" bearing I.D.
MW-10H	P12592 90 duro	Roller guide wheel , 7-3/4" O.D., 90 Duro
MIS-187B-STEEL		Roller guide wheel , 7" Steel Hub, Rubber Lining, Payne



WW-23



NW-003



MW-11



OW-10



HW-12



HW-12A



DW-14



OW-7



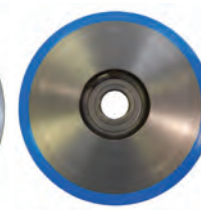
OW-7H



OW-15



AW-14



ACLAW-003



MW-10



Guide Rollers

S.E.E.S. #	O.E.M. #	Description
MIS-187B	M1292	Roller Guide wheel , 7" O.D. x .7874" bearing I.D. x 1-1/4" W tire. Double bearing. Tire face 1/2
NW-002	112-2040	Roller Guide wheel , Northern 7" Guide Roller, .25" Face, .6693" I.D.
AW-9	11939-01, B653002	Roller Guide wheel , 7" O.D. with threaded eccentric shaft. Threaded shaft 5/8-11 jam nut, 3-1/2" overall length. Tire face 1/2" wide, hub width 1-1/8"
AW-9A	11940-01, B653003	Roller guide wheel , 7" O.D., double bearing, .6693 I.D. Tire face is 1/2" wide, hub width is 1-1/8" wide. Similar to AW-9 but without eccentric.
AW-9AH	11940-01	Roller Guide wheel , 7" O.D. x 6693" I.D. without Eccentric, HD 90 Duro
AW-9H	11939-01	Roller Guide wheel , 7" O.D. x 6693" I.D. with Eccentric, ARW423 HD 90 Duro
STW-002	2004A-D6B	Roller Guide wheel , 6-1/2" O.D. .9843" I.D. (Double 6205 Brg)
MW-5	P3174	Roller Guide wheel , 6-1/2" O.D., .9843" bearing I.D., 1-1/4" tire width
MW-6	P2789	Roller Guide wheel , 6-1/2" O.D., .9843" bearing I.D., 1-1/4" tire width tapered to 1/2" wide tire face
OW-29		Roller Guide wheel , Guide Roller 6-5/16" O.D. 1-1/4" W x .9843" I.D. (2x6205)
OTGS-15		Roller Guide wheel , for Guide Shoe 6.3" x 1.88" (160mm x 30mm), bearing 6203 ID:17
THGS-3		Roller Guide wheel , For Roller Guide Assy 6.03" x 1.27" (153mm x 32mm x2 mm) 6204 Brg
HWW-002	378-14	Roller Guide wheel , Hollister Whitney, 6" diameter face roller, .430" face
HWW-002A	378-15	Roller Guide wheel , Hollister Whitney, 6" diameter side roller, .865" face
WW-21	323C160G01 323C160G02	Roller Guide wheel , 6" diameter, tire face 13/16", .6693", I.D., double bearing
MIS-142	18359	Roller Guide wheel , 6" O.D. x .7874" bearing I.D. x 1-1/4" W poly tire w/ 1/2" face. Double bearing, replacement wheel for URG-005
MIS-142A	18347	Roller Guide wheel , 6" x 1-1/4" W with 7/8" Face
MIS-142H	18359-H	Roller Guide wheel , 6" O.D. x 1-1/4" W x 1/2" F, .7874 I.D., HD 90 DURO
MIS-142AH	18347-H	Roller Guide wheel , 6" O.D. x 1-1/4" W x 7/8" F, .7874 I.D., HD 90 DURO



MIS-187B



NW-002



AW-9



AW-9A



AW-9AH



AW-9H



STW-002



MW-6



OTGS-15



HWW-002



MIS-142A



MIS-142H



MIS-142AH



WW-21



MIS-142

Guide Rollers

S.E.E.S. #	O.E.M. #	Description
MIS-142N	18359	Roller Guide wheel , 6" O.D. x .7874" bearing I.D. x 1-1/4" W, neoprene tire with 1/2" face. Double bearing, replacement wheel for URG-005
GW-2	378-12	Roller Guide wheel , 6" O.D. with 1/2" face, 2 bearings, .6693" I.D.
GW-2A	378-13	Roller Guide wheel , 6" O.D. with 3/4" face, 2 bearings, .6693" I.D.
ACLAW-002	M1503	Roller Guide wheel , 6" x 1-3/8", 150mm x 35mm with 6306 bearing (30mm I.D.)
CEMW-002A		Roller Guide wheel , 6" x 1-3/8", 150mm x 35mm, 30mm I.D., with Shaft
TW-003		Thyssen Tach Roller , 6" O.D. x 1.25" W 5/8" Face, Roller Only, No bearing
TW-003A		Thyssen Tach Roller , 6" O.D. x 1.25" W 5/8" Face, with Hub-Shaft and Bearings
KOGS-9		Roller Guide wheel , for Guide Shoe 5.91" x 1.5" (150mm x 38mm x 2mm), bearing 6003 ID:17mm
SCGS-15		Roller Guide wheel , for Guide Shoe 5.91" x 1.88" (150mm x 30mm x 2mm), bearing 6201 ID:12
CEMW-002		Roller , 150mm x 35mm, 6306 Brg 30mm I.D., 5-29/32" O.D.
MIS-188C		Roller Guide wheel , 5.875" O.D. x 1.578" W with 6204 brg (.7874" I.D.)
TW-004		Thyssen Roller Guide Wheel , 5-7/8" O.D. x 1" W .984" I.D. 6205 Brg, 3/8" Face
ELCW-001	76-15-001	Roller Guide wheel , DELCO 3" O.D. x 1" W 6203 Bearing, .660" Face
ELCW-001A		Shaft Assembly , for ELCW-001, Bolt, Eccentric Nut, Spacer and Nut
ELCW-002	124.5-15-001	Roller Guide wheel , DELCO 124.5mm (4.90") O.D. x 7.8" W 6203 Bearing, .560" Face
ELPW-001	815RGW	Roller Guide wheel , 5-3/4" O.D. x 5/8" I.D. for URG-009 and URG-010, Offset Bearings
ELPW-002	36SRGW	Roller Guide wheel , 5-3/4" O.D. x 5/8" I.D., for URG-009, Elpro, Centered Bearings
MIS-187A		Roller Guide wheel , 5" O.D. x .7874 bearing I.D. x 1-1/4" W tire. Double Bearing. Tire face 1/2"
MIS-188D	300BS50093/	Roller Guide wheel , 5" O.D. x 1.57" W with BR2-25 (2) 6204 brg (.7874" I.D.), Bucher
HW-5	35-1159-004	Roller Guide wheel , 5" O.D. x 1-1/8" W, 7/16" W tire face, bearing has steel inner sleeve with .630" bearing I.D.
DW-18		Roller Guide wheel , 5" O.D., .985" I.D., replaces Watson roller
KOGS-8		Roller Guide wheel , for Guide Shoe 4.92" x 1.03" (125mm x 26mm x 2mm), bearing 6003
MIS-188A		Roller Guide wheel , ACLA, 4.92" O.D. x 1.185" W 6204 bearing
HLW-007		Roller , for WC Cantalever Roller 4-7/8" O.D. x 1.375" with Ecc Shaft



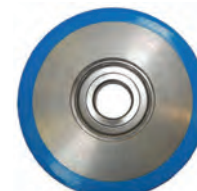
MIS-142N



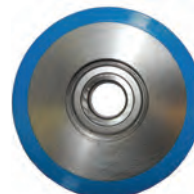
GW-2



GW-2A



ACLAW-002



CEMW-002



KOGS-9



SCGS-15



MIS-188C



ELPW-001



ELPW-002



MIS-187A



MIS-188D



HW-5



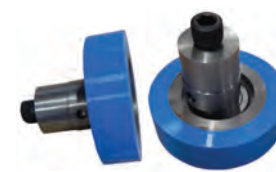
DW-18



WW-21A



KOGS-8



HLW-007



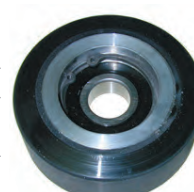
Guide Rollers



S.E.E.S. #	O.E.M. #	Description
OW-8	456CM4	Roller Guide wheel , 4-7/8" O.D. x 2-5/8" overall hub width. Polyurethane tire, 1" shaft, maintenance free sealed pump shaft bearing
OW-28		Roller Guide wheel , Guide Roller 4-7/8" O.D. 1-1/16" W x .7874" I.D. (2x6204)
WW-21A	M5594G02	Roller Guide wheel , 4-1/2" O.D., 1-1/4" thick with polyurethane tire, tire face 13/16", bearing .6693" I.D., double bearing
WW-21AH	M5594G02	Roller Guide wheel , 4-1/2" O.D. x 1-1/4" W .6693 I.D., HD 90 Duro
OTGS-14		Roller Guide wheel , for Guide Shoe 4.48" x 1.42" (114mm x 36mm), bearing 6203
OTGS-16		Roller Guide wheel , for Guide Shoe 4.48" x 1.42", bearing 6203 with Shaft
INCW-001		Inclinator Roller , 4.40" O.D., 5205 bearing
MW-4	P2654	Roller Guide wheel , 4-3/8" O.D. 7/8" wide with tapered face to 1/2", .7874" I.D.
DW-8	9832774, 63277	Roller Guide wheel , 4" O.D. x 1-1/4" W, tire face 1/2" W, two bearings, .6693" I.D.
DW-8H	9832774	Roller Guide wheel , 4" O.D. x 1-1/4" W x .6693" I.D., HD 90 Duro
ACW-001	TF-ACR400	Roller Guide wheel , for American Crescent, 4" O.D. x 2" Wide
ACLAW-001	140-424	Roller Guide wheel , ACLA, 3.94" x .98" (100mm x 25mm) with 6205 bearing (4" x 1")
MIS-188H		Roller Guide wheel , CTW, 3.94" x 1.18" x .79" (100mm x 30mm x 20mm), (2) 6204 Brg
SCGS-16		Roller Guide wheel , for Guide Shoe 3.94" x .98" (100mm x 25mm), bearing 6205 ID:25
MW-3	P12963	Roller Guide wheel , 3-15/16", O.D., 7/8" wide, .7874" bearing I.D.
MW-3-SUB		Roller Guide wheel , 3-15/16" x 7/8" No Bag/Label
MW-3B	P5985	Roller Guide wheel , 3-15/16" O.D. 1-1/8" wide, .7874" bearing I.D.
MW-3E		Roller Adaptor , 1-3/8" O.D. x 1/2" I.D. x 13/16" W
FJW-001	FR3187	Roller Guide wheel , 3.82" O.D. .79" I.D. (6204 Brg)
OW-3	456AK2	Roller Guide wheel , 3-3/4" O.D., polyurethane tire, sealed maintenance free bearing with 5/8" shaft
OW-9	456CN4	Roller Guide wheel , 3-3/4" O.D. x 7/8" Polyurethane tire, 5/8" hub, 1" shaft, maintenance free sealed pump shaft bearing
OTGS-5	KAA456K1	Roller Guide wheel , 3-3/4" O.D. x 7/8" Polyurethane tire, 5/8" hub, 1" shaft, maintenance free sealed pump shaft bearing
STW-001	12004A-D2A	Roller Guide wheel , 3-1/2" O.D. .79" I.D., 6204 Bearing
MIS-148		Roller Guide wheel , 3-1/2" O.D. x 15/16" W with 7/16" tire face, two bushings, bearing .7874" I.D., .673" shaft I.D., Serge CWT
HW-3	3-40150-71	Roller Guide wheel , 3-1/2" O.D. x 1-5/16" W, with 3/4" W tire face, .6693" bearing I.D.
MIS-239	3-40151-00	Roller Guide wheel , 3-1/2" O.D. x 1-5/16" W, with 3/4" wide tire face .6693" bearing I.D.
HW-9	3-40158-67	Roller Guide wheel , 3-1/2" O.D. x 1-1/16" W, with 3/4" W tire face, .5119" bearing I.D.

Guide Rollers

S.E.E.S. #	O.E.M. #	Description
HW-4	3-40196-74	Roller Guide wheel , 3-1/2" O.D. x 1-5/16" W, 1" tire face, with .7874" bearing I.D.
MIS-148B		Roller Guide wheel , 3-1/2" (no bushing)
MIS-148C		Roller Guide wheel , 3-1/2" x 1" W, .6693" I.D. 1" W Face, Double 6203 Bearing
NW-001	112-2037	Roller Guide wheel , Northern 3-1/2" Guide Roller .30" Face, .6693" I.D.
NW-001A	112-2112	Roller Guide wheel , Northern 3-1/2" Side Roller 1" Face, .6693" I.D.
NW-004	112-2113	Roller Guide wheel , Northern 3-1/2" with 1" face width, .6693" I.D.
WW-21B	M5594G04, M5594G05	Roller Guide wheel , 3-1/2" dia. with polyurethane tire, tire face 5/8", bearing .6693" I.D., double bearing
OW-204		Roller Guide wheel , 3-3/8" O.D. (3" Run dia.) .75" W, w/ 1/2-20 Ext Shaft
WW-28	694B995H01	Roller , For EZ-Oper 3-1/4" O.D. with Stud
HWW-001	377-14 377-12	Roller Guide wheel , 3-1/4" dia. H/W face roller, .420" face
HWW-001A	377-15	Roller Guide wheel , 3-1/4" dia. H/W side roller, .665" face, for HWRG-001
URGW-007		Roller Guide wheel , 3-1/4" for URG-007, 1/2" W for Face
URGW-007A		Roller Guide wheel , 3-1/4" for URG-007, 7/8" W for Side
MIS-143		Roller Guide wheel , 3-1/4" O.D. x .4724" bearing I.D. x .935" polyurethane tire, Double bearing
MIS-143A		Roller Guide wheel , 3-1/4" O.D. x .5906" bearing I.D. x .935" wide polyurethane tire, Double bearing
MIS-143AS		Roller Guide wheel , Soft Poly
MIS-143N		Roller Guide wheel , 3-1/4" x 1" W x .472" I.D., Neoprene Tire
MIS-143S		Roller Guide wheel , 3-1/4" O.D. x .4724" bearing I.D. x .935" soft polyurethane tire, Double bearing
GW-1	377-12	Roller Guide wheel , 3-1/4" O.D. with 1/2" face, 2 bearings, .6693" I.D.
GW-1A	377-13	Roller Guide wheel , 3-1/4" O.D. with 3/4" face, 2 bearings, .6693" I.D.
MW-12	513962-00F	Roller Guide wheel , 3-1/4" O.D. with two bearings, 5/8" I.D., 1/2" tire face
MW-13	513962-00S	Roller Guide wheel , 3-1/4" O.D. with two bearings, 5/8" I.D., 7/8" tire face
MW-13B		Shaft , Eccentric for MW-13, 1/2-13 Thrd
DW-15A	155804	Roller Guide wheel , 3-1/4" O.D. 1" W, 1/2" Face .669" I.D.
SDO-036	909-6008	Roller Guide wheel , ECI 3-1/4", 6203 bearing
KOGS-10	KM86789G02	Roller Guide wheel , for Guide Shoe 80mm 3.16" x 1.11" (80mm x 28mm x 2mm), bearing 6203
OW-21	A6037D1	Roller Guide wheel , 3.15" O.D., .587" W, 1/2" face, .875" I.D., aluminum
ACLAW-004	141867.06	Roller Guide wheel , ACLA, 3.15", 80mm x 25mm with 6205 bearing (25mm ID)
ACLAW-005		Roller Guide wheel , ACLA, 2.36", 80mm x 25mm with 6205 bearing (25mm ID)



HW-4



MIS-148B



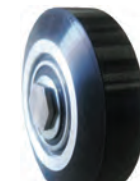
NW-001



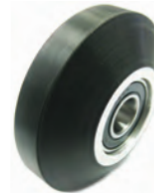
NW-004



WW-21B



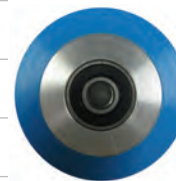
HWW-001A



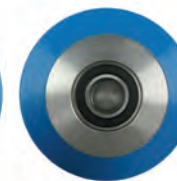
URGW-007



URGW-007A



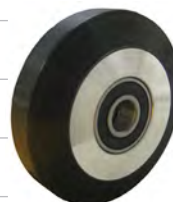
MIS-143



MIS-143A



MIS-143N



MIS-143S



GW-1



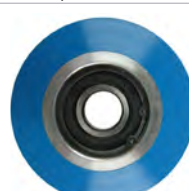
GW-1A



MW-12



MW-13



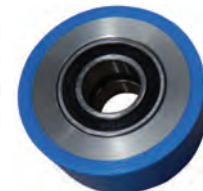
DW-15A



OW-21



ACLAW-004



ACLAW-006

Guide Rollers

S.E.E.S. #	O.E.M. #	Description
ACLAW-006		Roller Guide wheel , ACLA, 3.15", 80mm x 30mm with 6005 bearing (25mm ID)
ACLAW-007		Roller Guide wheel , ACLA, 180mm x 35mm w/ (2) 6204 bearing (20mm ID)
ACLAW-007A		Roller Guide wheel , ACLA, 180mm x 35mm w/ (2) 6005 bearing (25mm ID)
CW-001		Carousel Wheel , 3.15" O.D., 80mm x 25mm x 17mm Delring with 6203 Bearing
CWB-001		Carousel Wheel Bumper , PPT95A
CWB-001A		Bumper Back Plate , for CWB-001
CWB-001B		Connector Assembly , for CWB-001
ETNW-001		Roller Guide wheel , ETN 50mm O.D. x 15mm W 6000 Brg, 110mm ID
ETNW-002		Roller Guide wheel , ETN 50mm O.D. x 18mm W 6003 Brg, 117mm ID
TW-002	650C003	Roller Guide wheel , Thyssenkrupp C.W. 3-1/8" O.D. x 7/8" (80mm x 22mm), .6693" I.D.
OTWH-11		Roller , 3-1/8" O.D. x .79" (80mm x 20mm) Bearing 6204
SEES-HLW-001		Roller Guide wheel , 3.132" x 1.185", Hollister Whitney
SEES-HLW-001A		Roller , 3.132" x 1.185" with Eccentric Shaft and Hdw
HLW-002	SP-000138	Roller , for Waupaca 80mm with Ecc Hex Shaft, 3-5/32"
HLW-004	M-005598	Roller , for Cemco\REI 80mm with Eccentric Hex Shaft
HLW-004A		Roller , for Cemco\REI 80mm x 35mm with Straight Hex Shaft
OW-4	456DN1	Roller Guide wheel , 3" O.D., 3/8" flat polyurethane tire face, with 1/2" N.C. threaded eccentric shaft 1" L
OW-4B	456DN3	Roller Guide wheel , shaft 2-3/8" L, 7/8" spacer, O.D. 3"
DW-15	9834734, 103473	Roller Guide wheel , 3" O.D., .668" Bearing I.D., for roller assembly #103477
MIS-188K		Roller Guide wheel , 3" O.D. x 7/8" Face 1-3/16" W, (2) R12RS (3/4" Bore)
MIS-187	M1286	Roller Guide wheel , 3" O.D. x .5906" bearing I.D. x 1" W tire. Double bearing. Tire face 3/8"
MW-2	P2964	Roller Guide wheel , 3" O.D., 1/2" tire face, .7874" bearing I.D.
WW-20	144A277G01	Roller Guide wheel , 3" diameter, .6693" I.D., 1" thick
WW-20A	144A277G02	Roller Guide wheel , 3" .6693 bore, steel hub
WW-20AH	144A277G02-H	Roller Guide wheel , 3" .6693 bore, steel hub, hard poly
SCWH-20		Roller , 76mm x 25mm, 6204
FJWH-1		Roller , 75mm x 23.5mm, 6204, 2.95" O.D.
FUJ-078		Pressure Roller , 75mm x 70mm x 20mm I.D. (6004 Brg)
TOWH-4		Roller Guide wheel , with Plastic roller, 2-7/8" x 7/16" 73mm O.D. x 11mm I.D. 6200 bearing
MW-13A		Roller Guide Wheel , 2-7/8" O.D. Piston Follower Double 99502H bearing 5/8" Bore
SCWH-5		Roller Guide wheel , Nylon Aluminum Hub Handrail Roller 2.75" (70mm*50mm)
DW-11	9819745	Roller Guide wheel , 2-5/8" O.D. counter weight, Omega
TW-001	9819745	Roller , Thyssen Counter Weight, 2.625" diameter, .6693" I.D., 90 Duro
DCW-002	60400011	Roller Guide wheel , Revolver Boone Olster 2-9/16" O.D. x 3/4" W, 6205 Bearing
MIS-221		Roller Guide wheel , 2.5" home lift, 1/2" I.D., 2-1/2" O.D., 1.485" bearing I.D.
ACW-002	TF-ACR25	Roller Guide wheel , for American Crescent, 2-1/2" O.D. x 2" Wide
ACW-003	TF-ACR25	Roller Guide wheel , for American Crescent, 2-1/2" O.D. x 1" Wide



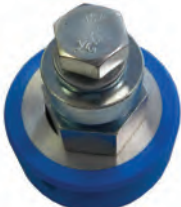
ACLAW-007



ACLAW-007



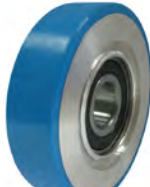
HLW-002



HLW-004



OW-4



DW-15



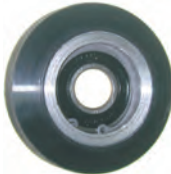
MIS-188K



MIS-187



MW-2



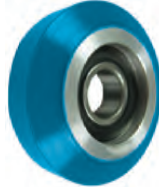
WW-20



WW-20A



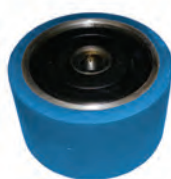
SCWH-20



DW-11



DCW-002



MIS-221

Miscellaneous Rollers

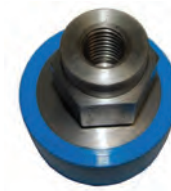
S.E.E.S. #	O.E.M. #	Description
ACW-002	TF-ACR250	Roller , for American Crescent, 2-1/2" O.D. x 2" Wide
ACW-003	TF-ACR251	Roller , for American Crescent, 2-1/2" O.D. x 1" Wide
CEMW-001		Cemco Coupling Roller , Roller Only, 1-15/16" O.D. x 1-1/8" I.D.
DW-1	9838351, 63835	Roller kit , 1-5/8" diameter roller, nylon bushing and retaining ring
DW-1S		Pickup Roller , with Shaft and Retaining Ring
DW-1-P	D-803R1-POLY	Roller kit , 1-5/8" O.D. Poly Blue with Bushing and ring
DW-1-PS	D-803R1-POLY-SOFT	Roller kit , 1-5/8" O.D. Poly Black - Soft with Bushing and ring
FJLO-5		Wheel , For Door Lock 38mm O.D. 16mm W, 14mm I.D.
FJLO-6		Wheel , For Door Lock 30mm O.D. 16mm W, 14mm I.D.
HLW-001		Roller , 2-3/8" O.D. x 1-3/16" W
HLW-001E		Roller , for OLS, 2-3/8" O.D. x 1-3/16" W w/ Eccentric Hex Shaft
HLW-003	M-005598	Roller , for Waupaca 60mm with Straight Hex Shaft
HLW-005		Roller , for Garaventa 2-1/4" O.D.
HLW-005A		Roller , for Garaventa 2-1/4" O.D. .765" W, with Straight Shaft
HLW-006		Roller , for Cheney 2.43" O.D. x .595" W, with Straight Shaft
HLW-008		Hanger Roller , for Savaria 3.375" O.D. x 5/8" with Shaft
KOOL-SM2093		Sematic Roller , Radius Groove, M6 Shaft, 60mm O.D. x18mm wide
KOOL-SM2094		Sematic Roller , Radius Groove, M8 Shaft, 36/30mm O.D. x18mm wide
HLW-008		Hanger Roller , for Savaria 3.375" O.D. x 5/8" with Shaft
MOT-WH-5		Wheel , Tach for 1/2" Shaft
OW-205		CW Roller , Convex Tire 2.20" O.D. x 7/8" W x .370" I.D.
REW-001		Roller , for Residential elevator, 3" O.D. x 1-1/2" W with Shaft
SDO-008B	611010220	Roller/Axle Assembly , 30mm x 10mm for Schindler QKS9, D30, 1.18" O.D.
SEMW-001		Sematic Roller , 36/30mm O.D. x 18mm Wide Radius Groove, M8 Shaft
SEMW-002		Sematic Roller , 60mm O.D. x 18mm Wide Radius Groove, M6 Shaft
THLO-1		Roller , for Door Lock 30mm x 20mm ID:15, 1.18" O.D.



ACW-002



HLW-001



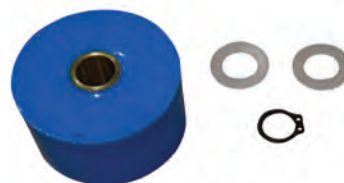
HLW-001E



HLW-003



DW-1



DW-1-P



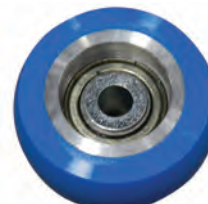
HLW-006



FJLO-5



FJLO-6



OW-205



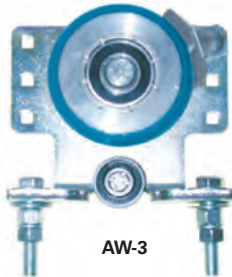
CEMW-001



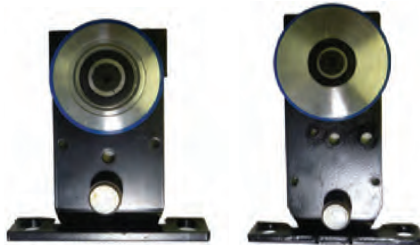
WW-4



AW-1



AW-3

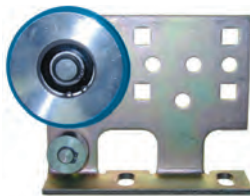


DW-2A

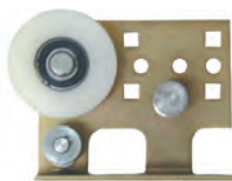
DW-3A



WW-1



WW-7RH



WW-7RH NYLON



WW-14LH



OW-23

Hanger Assemblies

S.E.E.S. #	O.E.M. #	Description
WW-4	T5409G99	Hanger assembly , complete, with WW-5, 4-3/8" O.D.
WW-11RH	324C083G99	Hanger assembly , complete, R.H., with WW-12, 4-1/4" O.D.
WW-11LH	324C083G99	Hanger assembly , complete, L.H. with WW-12, 4-1/4" O.D.
HW-18	3-40155-59	Door Hanger & Roller , Assembly with 3-5/16" roller
DW-3A	9838533	Hanger assembly , high pocket, consists of mounting bracket DW-3B, hanger roller DW-3, 3-5/16" O.D., and eccentric upthrust shaft DW-9, with roller tire assembly DW-10
AW-1	12103-01, B733004	Hanger assembly , with 3-1/4" steel roller
DW-3-AL	9864295-AL	Hanger assembly , 3-5/16" Alum Hub 90 Duro Urethane
AW-3	12103-01, B733004	Hanger assembly , with 3-1/4" polyurethane roller
DW-2A	9838340	Hanger assembly , low pocket, consists of mounting bracket DW-2B, hanger roller DW-2, 2-7/8" O.D. and eccentric upthrust shaft DW-9, with roller tire assembly DW-10
WW-1	T5411G99	Hanger assembly , 3-3/8" O.D., complete for flat track
WW-1R	T5411G99	Hanger assembly , For Round Track 3-3/8", Individual -Round
WW-14LH-P	W408L-POLY	Hanger assembly , L.H. with Poly Roller, 2-3/4" O.D.
WW-14RH-P	W408R-POLY	Hanger assembly , R.H. with Poly Roller, 2-3/4" O.D.
WW-14LH-PR	W408L-POLY-R	Hanger assembly , L.H. with Poly Roller, Reversed (Backside), 2-3/4" O.D.
WW-14RH-PR	W408R-POLY-R	Hanger assembly , R.H. with Poly Roller, Reversed (Backside), 2-3/4" O.D.
WW-7RH	M7405G99	Hanger assembly , complete, R.H. with WW-18, 2-3/4" O.D.
WW-7LH	M7405G99	Hanger assembly , complete, L.H. with WW-18, 2-3/4" O.D.
WW-7RH-NYLON	M7405G3, G5	Hanger assembly , complete, R.H. with WW-17 nylon roller, 2-3/4" O.D.
WW-7LH-NYLON	M7405G4, G6	Hanger assembly , complete, L.H. with WW-17 nylon roller, 2-3/4" O.D.
WW-14RH	325C798G01	Hanger assembly , complete, R.H., with WW-15, 2-3/4" O.D.
WW-14LH	325C798G02	Hanger assembly , complete, L.H., R.H., with WW-15, 2-3/4" O.D.
OW-23	389J	Hanger assembly , for Type B & 7087, OW-13A, 2-3/4" O.D.

Hanger Assemblies

S.E.E.S. #	O.E.M. #	Description
OW-19	B6037B6	Hanger assembly , 2-1/4" O.D., for hoistway, includes heavy bracket OW-19A, B6037B1 rollers and wiper
GDO-2A	HH10-0041N, OS-NM	Hanger Assembly , includes; nylon wheel 2-1/4" O.D. x 9/16", mounting bracket and hardware required to replace "old style" s steel roller
KOOL-KN-2021	KN2021	Roller , Hanger ADM/ADR 70mm x 17mm with Shaft
SCHR-2A		Hanger assembly , 1.57" x .35", 40mm x 9mm Straight Bracket only
SCHR-2B		Hanger assembly , 1.57" x .35", 40mm x 9mm Straight Bracket with Hardware
SCHR-3A		Hanger assembly , 1.57" x .35", 40mm x 9mm Offset Bracket
SCHR-3B		Hanger assembly , 1.57" x .35", 40mm x 9mm Offset Bracket, with Counter Sunk Holes



OW-19

SEES, INC.

SAVE BIG ON SUPPLIES

Everything you need for an elevator inspection.



SEES-WC-002
SEES Weight Test Cart, 500lbs

SEES-TOOL-002

Voltage Detector with Light



MIS-211
Door Pressure Gauge



SEES-HYD-PG-007
SEES Pressure Gauge Kit

Hydraulic Elevator - Periodic Test Tag						
Person or Firm Performing Test:						
Periodic Test Category: 1						
A17.1-2007 & later	A17.1a-2008 & later	Test Item	Test Date	Test Date	Test Date	
A17.1.2.2	A17.1.2.2	Rated Voltage & System Pressure				
A17.1.2.3	A17.1.2.3	Control & Protection Wiring				
A17.1.2.4	A17.1.2.4	Normal Stopping Stopping Device				
A17.1.2.5	A17.1.2.5	Governors				
A17.1.2.6	A17.1.2.6	Guides				
A17.1.2.7	A17.1.2.7	Oil Bathing				
A17.1.2.8	A17.1.2.8	Emergency Operation P.P.S.				
A17.1.2.9	A17.1.2.9	Standby Power Operation				
A17.1.2.10	A17.1.2.10	Power Operation of Doors				
A17.1.2.11	A17.1.2.11	Terminal Speed Enforcement				
A17.1.2.12	A17.1.2.12	Low Oil Protection				
A17.1.2.13	A17.1.2.13	Pressure Relief				
A17.1.2.14	A17.1.2.14	Pressure Relief & Filling				
A17.1.2.15	A17.1.2.15	Provisions for				
A17.1.2.16	A17.1.2.16	Power Operation of				
A17.1.2.17	A17.1.2.17	Door System				
A17.1.2.18	A17.1.2.18	Block Register Device				

MIS-166HT

Test Tag, Hydro Elevator 4x6 A17.1-2007 & A171a-2008



SEES-DWT-001

SEES Door Wedge Tool, Poly with Key Chain



SEES-JUMPER-001

SEES Jumper Kit, used for temporarily jumping out circuits while under repair. Jumper test lead with pouch, includes alligator clip, spring loaded plunger, and lug terminal.



WR-MT

Wire rope measuring gauge, for imperial sizes, go/no go style, use on rope diameters 3/8", 7/16", 1/2", 9/16", 5/8", 11/16" and 3/4"



HYD-PSW-002

Pressure Switch, Low Pressure 15-150 PSI Range, 250V Max.



Always Smooth Sailing

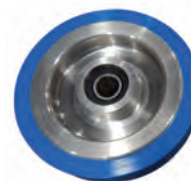


2781 West McNab Rd., Pompano Beach, FL 33069 • 800-526-0026 • www.SEESinc.com

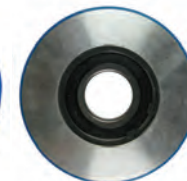
SOUTHERN ELEVATOR & ELECTRIC SUPPLY

Hanger Rollers

S.E.E.S. #	O.E.M. #	Description
HIW-3		Hanger Roller , 5.12" O.D., 130mm x 30m with 15mm I.D. Double 6202
WW-5	R8636G98, R8636G01	Hanger roller , 4-3/8" diameter, 1-1/8" bearing, aluminum with polyurethane tire, fits square rail
MIS-188B		Hanger Roller , 4.25" O.D. x .60" W with 6204 brg (.7874" I.D.) Westinghouse
WW-12	323C235G02	Hanger Roller , 4-1/4" diameter, 6204" bearing .7874" I.D., aluminum with polyurethane tire
WW-12N	323C235G01	Roller , Nylon 4-1/4" O.D. with .7874" I.D.
STW-003	ST343	Hanger Roller , 3.812" x .875" .6693" I.D. (6203 Brg)
KOHR-1		Roller , Hanger 3.7" x .75" (94mm x 19mm), bearing 6203 groove diameter 84.5mm
KOHR-6		Roller , Hanger with Eccentric 3.7" x .75" (94mm x 19mm), bearing 6203, groove diameter 84.5mm
HW-7	3-40157-63	Hanger Roller , 3-11/16" diameter with .6299" bearing I.D.
MW-8	MAP344, P31344	Roller , Car door roller, 3-11/16"
MW-8E	P022237	Roller , Car door roller, 3-11/16", with eccentric shaft
HW-2	3-16847-01	Door Hanger Roller , nylon, 3-11/16" O.D. x 3/4" wide, .6299" bearing I.D.
MIS-143B	03-018-037	Hanger Roller , ESCO 3-11/16" 3-1/4" Run O.D. Bushing
MIS-143C	A406AM, 03-018-08	Hanger Roller , ESCO 3-11/16" 3-1/4" Run O.D. without bushing
OTHR-2		Roller , Hanger, 3.54" x .71" (90mm x 18mm)
OTHR-1		Roller , for Hanger Assembly 3.39" x .79" (86mm O.D. x 20mm), bearing 6204 ID:20mm
KOHR-18		Roller , Hanger 85mm x19mm, bearing 6203Z, 3.35" W
MIS-195		Door Hanger Roller , Williamsburg Style, 3-3/8" O.D., x 7/8" W steel roller with flat nylon track 1/2", eccentric threaded shaft 1/2-20 fine x 3/4" long
MIS-195A		Door Hanger Roller , 3-3/8" O.D., x 7/8" W steel roller with convex nylon track, 1/4" radius tire face with eccentric threaded shaft 1/2-20 fine x 3/4" long
MIS-195B		Roller , 3-3/8" O.D. with 1/4" Radius, 3" Running dia. 1/2-20 Eccentric Shaft, no Plate
MIS-195C		Roller , 3-3/8" O.D. with 1/4" Radius, 3" Run dia. 5/8-18 Eccentric Shaft, *Recessed Hub on Both Sides
OW-40		Hanger Roller , 3-3/8" Poly 6203 with Eccentric Shaft 7/16-20
OW-40A		Hanger Roller , 3-3/8" Poly 6203 w/ Straight Shaft 7/16-20
WW-2	R8858G01	Hanger Roller , 3-3/8" diameter, R8858G01 aluminum with polyurethane tire, 6204 bearing
HW-14	AR928A3	Hanger Roller , 3-3/8" diameter, eccentric shaft 5/8"
HW-14A		Hanger Roller , 3-3/8" O.D. with Spec Eccentric
OW-12	456CX4	Door Hanger Roller , 3-3/8" O.D. x 13/16", .7874 bore I.D., with 11/32" radius on concave polyurethane tire surface
OW-12A		Door Hanger Roller , 3-3/8" O.D. x 13/16", .7874" I.D., all steel construction for flat track
OW-12C		Door Hanger Roller , 3-3/8" O.D. x 13/16", .7874" I.D., aluminum with polyurethane tire for flat track
OW-12S		Door Hanger Roller , 3-3/8" O.D. x 13/16" .7874" I.D., steel with polyurethane tire for flat track



HIW-3



WW-5



MIS-188B



WW-12



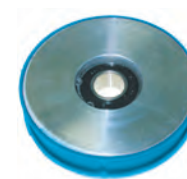
WW-12N



KOHR-1



KOHR-6



HW-7



MW-8



MW-8E



HW-2



OTHR-2



OTHR-1



KOHR-18



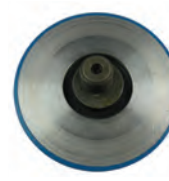
MIS-195



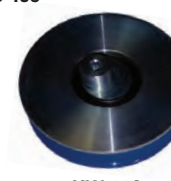
MIS-195C



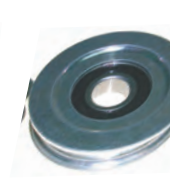
OW-40



HW-14



HW-14A



OW-12A

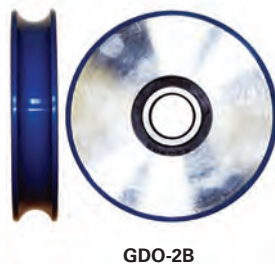
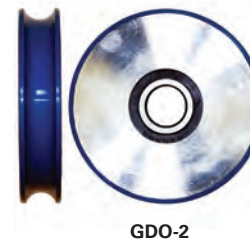
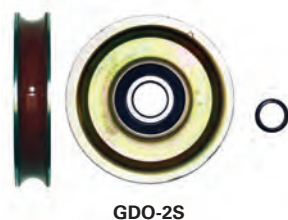


Hanger Rollers

S.E.E.S. #	O.E.M. #	Description
OW-1	456DH1	Door Hanger Roller, 3-3/8" O.D. x 13/16" poly tire with eccentric, 1/2" NF threaded shaft
OW-1BA		Door Hanger Roller, 3-3/8" O.D. Flat/Radius, Roller Only
OW-1E	AAA456YA1/ AAA456YA3	Door Hanger Roller, 3-3/8" Flat/Rad with Ecc Shaft M12 Thrd
OW-1E-A		Hanger Roller, 3-3/8" Flat/Rad w/ Ecc Shaft Reversed
OW-1S		Hanger Roller, 3-3/8" O.D. Steel, Flat Track with eccentric
MDW-001		Modern Elevator Hanger Roller, 3-3/8" O.D. Flat Track
OW-1B		Hanger Roller, 3-3/8" O.D. Flat / Radius, w/ OW-13B
OW-1C		Hanger Roller, 3-3/8" O.D. Flat / Radius, with Shaft
OW-1D	456EW1 456EW2	Hanger Roller, 3-3/8" Flat / Rad with Ecc. Shaft 1/2-20 Thread
MIS-TYL-001		Hanger Roller, Tyler, 3-5/16", with eccentric
MIS-TYL-001B		Hanger Roller, Tyler, 3-5/16", with HW-14 Eccentric
MIS-TYL-002		Tyler Bearing, with eccentric and hardware
MIS-TYL-003		Roller, 3-5/16" with Eccentric Medium Poly
MIS-TYL-005		Hanger Roller, 3-3/8" with ecc. 6204 Brg, 5/8-18 Thread
MIS-TYL-005A		Hanger Roller, Tyler, 3-3/8" without Eccentric Shaft 6204 Brg
MIS-TYL-006		Hanger Roller, 3-3/8" with ecc. 6204 Brg
MIS-TYL-006A		Door Gib, with Brass Insert & Mgt. Screw
MIS-TYL-007		Door Gib Kit, Gib, Bracket # Hdw
KW-005		Roller, Hanger 3-5/16" O.D. x .6693" I.D., with 7/16-20 Shaft
KW-005E		Roller, Hanger 3-5/16" O.D. x .6693" I.D., with 7/16-20 Ecc. Shaft
KOOL-OT2036	OT2036	Hanger Roller, OTIS, Europa 70mm
DW-3	9864295	Hanger Roller, .6693" I.D., steel with polyurethane tires, 3-5/16" diameter
HW-6	3-40130-77, 3-40130-79	Hanger Roller, for B-4 hanger, 3-5/16" O.D. with .625" bearing I.D.
MIW-001	MBH331	Hanger Roller, Flat Track 3.312" O.D. x .687" I.D.
AW-11		Sheave, 3-3/8" O.D., .6693 I.D., #7 Car door hanger For concave track
OW-2	456W1	Door Hanger Roller, 3-1/4" O.D. x 11/16" with .9841 bore I.D., polyurethane tire
OW-18	A456EA1	Steel Hanger Roller, for 6178A assembly 3-1/4" O.D. x 11/16", bore 1/2"
OW-11S	A456W1	Door Hanger Roller, 3-1/4" O.D. x 11/16", 1/2" I.D. steel roller with polyurethane tire
DW-17	9861245	Roller, hanger, 3-1/4" O.D. aluminum wheel with urethane tire for assembly #66137
OW-18A	A456EA1	Hanger Roller, 3-1/4" O.D. 11/16" wide, for 6178A assembly steel with polyurethane tire
DALW-002E		Hanger Roller, 3-1/4" O.D. with Ext Ecc. Shaft, 6203
SCHR-050		Hanger Roller, 3-3/8" O.D. x .80 W with Eccentric 5/8-18 Shaft

Hanger Rollers

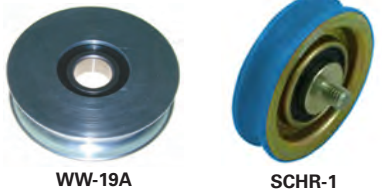
S.E.E.S. #	O.E.M. #	Description
GDO-2S		Hanger Roller , 3-1/4" O.D. Steel Hub with Poly Tire
BW-001		Hanger Roller , Beckett 3-1/4" x .6693" I.D. w/ Shaft
BW-001A		Hanger Roller , Alum, Beckett 3-1/4" x .6693" I.D. with shaft
BW-001AE		Hanger Roller , Alum, Beckett 3-1/4" x .6693" I.D. with eccentric shaft
BW-002AE		Hanger Roller , Alum, Beckett 3-1/4" x .6693" I.D., Ext Ecc-Shft
GDO-2	456DH4	Door Hanger Roller Kit , 3-1/4" diameter roller with bushing and HH1-0025N hardware kit, aluminum hub with polyurethane tire
GDO-2-INSERT		Reducer Bushing , 1/2" I.D. insert for GDO-2, 2N and 2S
GDO-2B		Door Hanger Roller , 3-1/4" diameter roller, aluminum hub with polyurethane tire. Used in GDO-2
GDO-2C	G401AM	Hanger Roller , 3-1/4" O.D. x .6693" I.D. with axle stud
GDO-2N	HH1-0025N	Door Hanger Roller Kit , 3-1/4" diameter roller with wiper, steel hub with nylon tire
GDO-2N-KIT		Door Hanger Roller Kit , 3-1/4" diameter roller with wiper and hardware kit, steel hub with nylon tire
GDO-2N-SET		Door Hanger Roller Set , 3-1/4" O.D. Nylon with Wiper, Hdw, Bushing
GDO-2SKW-B	HH5-0028N	Door Hanger Roller Kit , 3-1/4" steel roller with Type "C" wiper & hardware
GDO-2SK		Hanger Roller , 3-1/4" O.D. with hardware, steel version, made of GDO-2S and GDO-2-XHDW-KIT
FJW-002	FH325	Hanger Roller , 3.25" O.D. with Ecc. .7874" I.D. (6204 Brg)
MEHR-001	30008565	Roller , Meiller Door Hanger 65mm x 17mm 6201 Radius Track, Single Groove
MEHR-002	30008566	Roller , Meiller Door Hanger 65mm x 21mm 6201 Radius Track, Double Groove





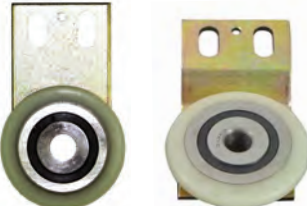
Hanger Rollers

S.E.E.S. #	O.E.M. #	Description
MIS-EW-001		Hanger Roller, ERM Nylon 3.135" O.D. x .6693" I.D. x .720" Wide
WW-19A	7266C866G01	Steel Hanger Roller, 3" dia.
FUJ-072	D00403001	Door Hanger Roller, O.D. 3" (76mm) x .67" (17mm)
SCHR-1		Roller for Hanger, O.D. 3" (76mm)
SCHR-2		Roller for Hanger, 2.95" x .47" (75mm x 12mm), straight panel
SCHR-3		Roller for Hanger, 2.95" x .47" (75mm x 12mm)
SCHR-052		Hanger Roller, Varidor 30, 2.91" x .71", 74/63mm x 18mm, with Shaft/Bush
MW-7	MAP341	Roller, Hatch door roller, 2-7/8"
DW-2	9838302, W-417	Hatch Door Hanger Roller, 2-7/8" dia., .6693" I.D. 63830) aluminum with polyurethane tires
DALW-001E		Hanger Roller, 2-7/8" O.D. with Ext Ecc. Shaft, 6203 Brg
DCW-001		Carroage Hanger Roller, 2-7/8" O.D., Alum with Poly
DCW-004	412498	Roller, Duraglide 1000 Load Wheel Assy, Rev P5
SCHR-8		Roller for Hanger for AD9 2.83" x .59" (72mm x 15mm) GD:64, bearing 6200
HIHR-6		Roller, Freight Lift Hanger 2.76" x .79" (70mm x 20mm) GD:64, 6204 ID:20mm
TOWH-3		Roller, 2-3/4" diameter, nylon roller
WW-17A		Roller, Nylon 2-3/4" O.D. x .6693" bore, 6203 bearing
OW-13	456CC1	Steel Door Roller, 2-3/4" O.D. x 3/4", .7872" bore I.D. (for OW-23)
OW-13A	456CC1	Door Roller same as above but with polyurethane tire (for OW-23)
OW-32		Hanger Roller, 70mm x 14mm x 8mm
WW-15	325C798G09	Aluminum Roller, 2-3/4" dia.
WW-18	576B535G98	Hanger Roller, 2-3/4" diameter, aluminum with poly tire
WW-15A		Aluminum Roller, 2-3/4" dia., .600" thick
WW-17	576B535G04	Nylon Roller, 2-3/4" dia., .5906" I.D.
WW-18S	576B535-G98	Hanger Roller, 2-3/4" Steel with poly, .5906" I.D.
OW-13AW		Hanger Roller, 2-3-4" O.D., Flat track (wide)
WW-15P	W-408W1-POLY	Hanger Roller, Alum w/ Poly 2-3/4" O.D. for WW-14LH/RH-P
THHR-1		Roller for Door Hanger 70mm x 17mm (2.76" x .67"), bearing 6200 ID:10 GD:62
THHR-2		Roller for Door Hanger 70mm x 17mm (2.76" x .67"), bearing 6200 ID:10 GD:62
FJHR-1		Hanger Roller, 2.68" O.D. x .55" W, bearing 6202
KOHR-16		Roller, Hanger 2.68" x .67" (68mm x 17mm), bearing 6203Z
HW-8	3-40157-60	Hanger Roller, 2-5/8" diameter with .6299" bearing I.D.
HW-15	35-727-30	Door Clutch Roller, 2-9/16" O.D. x 3/4" wide with 5/8" bearing I.D., for door clutch arm R.H. or L.H.
HIHR-1		Roller, Hanger 2.56" x .51" (65mm x 13mm), bearing 6202RS, GD:60 ID:15mm



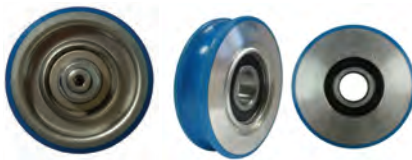
WW-19A

SCHR-1



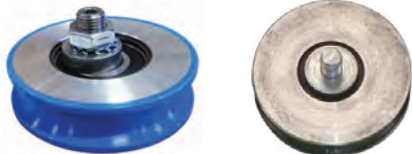
SCHR-2

SCHR-3



MW-7

DW-2



DALW-001E

SCHR-8



HIHR-6

OW-13A



WW-18

WW-15

WW-15A

WW-17



WW-18S

WW-15P

KOHR-16

HW-8

HW-15

HIHR-1

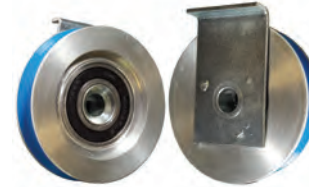
Hanger Rollers

S.E.E.S. #	O.E.M. #	Description
KOWH-20		Roller , for SELCOM Hanger 2.52" x .43" (64mm x 11mm), bearing 6202 ID:10
KOWH-20A		Hanger Roller , SELCOM 86mm x 16mm, 6203 Brg
KOHR-27		Roller , Pulley, 2.52" x .354" (64mm x 9mm 8mm I.D.), Counterbore Shaft
KOHR-3		Roller , Nylon Hanger 2.44" x .63" (62mm x 16mm), bearing 6203 groove diameter 52mm, ID:17mm
KOHR-14		Roller , Hanger 2.35" x .51" (59.6mm x 13mm), bearing 6002Z
KOHR-15		Roller , Hanger 2.35" x .51" (59.6mm x 13mm), bearing 6002Z
GDO-2AP		Hanger Roller , 2-1/4" O.D. Alum Hub with Poly Tire
HW-1A	3-16497-00	Roller Guide Assembly , door clutch, 2-1/4" O.D. x 9/16" face with 7/16" bore
KOHR-2		Roller , Hanger 2.20" x .61" (56mm x 15.5mm), bearing 6202
KOHR-28		Roller , Hanger 2.20" x .55" (56mm x 14mm) with Integral Shaft
KOHR-17		Roller , Hanger 2.19" x .79" (55.5mm x 20mm), bearing 6202Z
SCHR-7		Roller , for Hanger 2.13" x .71" (54mm x 18mm) GD:48, bearing 6200 ID:10
SCHR-11		Roller , for Hanger 2.13" x .79" (54mm x 20mm) GD:48, bearing 6200 ID:10
OW-20	456FC1	Hanger Roller , LRV, 2" O.D.
OW-17	456CE4	Roller with eccentric shaft, 2" O.D. x 9/16" with threaded shaft 1/2-20
KOWH-21		Roller , 1.98" x .47" (50mm x 12mm), bearing 6002
KOWH-22		Roller , 1.89" x .34" (48mm x 9mm), bearing 608, GD:40 ID:8
OTHR-4	XAA520C1	Roller , for hanger, 84 mm, 3.3" O.D.
OTHR-6	FOC2215Z137	Orly Roller , Door Hanger, D50/40mm x 15mm M10 Eccentric Stud
KOHR-12		Roller , Eccentric for Hanger 1.80" x .67", bearing 6201, groove diameter 39mm
KOHR-7		Roller , Retainer for Hanger 1.80" x .63", bearing 6001, groove diameter 39mm, 6G-M12
KOHR-4		Roller , Nylon Hanger 1.73" x .47" (44mm x 12mm) M8, groove diameter 38mm, ID:12mm
KOHR-9		Roller , for Hanger 1.73" x .63" (44mm x 16mm) groove diameter 38mm, M10
KOHR-8		Roller , Retainer for SELCOM Hanger 1.69" x .63", bearing 6202 with Eccentric Shaft
KOHR-26		Roller , Hanger, 1.42" x .55" (36mm x 14mm) with Eccentric Shaft 10mm Thrd

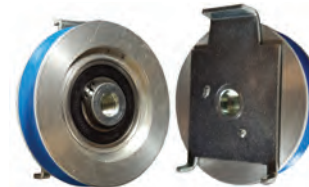


KOWH-20

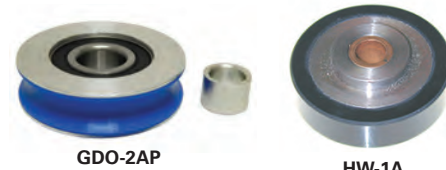
KOHR-3



KOHR-14



KOHR-15



GDO-2AP

HW-1A



KOHR-2

KOHR-17



SCHR-7

SCHR-11

OW-20



OW-17

KOWH-21

KOWH-22



OTHR-4

KOHR-12

KOHR-7

KOHR-4

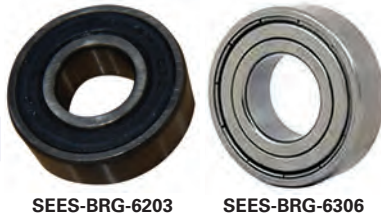


KOHR-9

KOHR-8



Bearings



SEES-BRG-6203

SEES-BRG-6306



MIS-152



MIS-233



MIS-233A



MIS-233B



MIS-233C



MIS-233D



MIS-233E



MIS-233F



MIS-233G

S.E.E.S. #	Description	S.E.E.S. #	Description
SEES-BRG-608	Bearing, 608-ZZ	SEES-BRG-6201	Bearing, 6201-2RS
SEES-BRG-1602	Bearing, 1602-ZZ	SEES-BRG-6201-8	Bearing, 6201-2RS-8
SEES-BRG-1614	Bearing, 1614-2RS	SEES-BRG-6202-10	Bearing, 6202-2RS
SEES-BRG-1621	Bearing, 1621-2RS	SEES-BRG-6203	Bearing, 6203-2RS
SEES-BRG-5200	Bearing, 5200-2RS	SEES-BRG-6204	Bearing, 6204-2RS
SEES-BRG-5201	Bearing, 5201-2RS	SEES-BRG-6205	Bearing, 6205-2RS
SEES-BRG-5204	Bearing, 5204-2RS	SEES-BRG-6206	Bearing, 6206-2RS
SEES-BRG-5205	Bearing, 5205-2RS	SEES-BRG-6208	Bearing, 6208-2RS
SEES-BRG-5304	Bearing, 5304-2RS	SEES-BRG-6302	Bearing, 6302-ZZ
SEES-BRG-6000	Bearing, 6000-2RS	SEES-BRG-6304	Bearing, 6304-ZZ
SEES-BRG-6001	Bearing, 6001-2RS	SEES-BRG-6305	Bearing, 6305-ZZ
SEES-BRG-6002	Bearing, 6002-2RS	SEES-BRG-6306	Bearing, 6306-ZZ
SEES-BRG-6003	Bearing, 6003-2RS	SEES-BRG-6800	Bearing, 6800-ZZ
SEES-BRG-6004	Bearing, 6004-2RS	SEES-BRG-99502H	Bearing, 99502H
SEES-BRG-6200	Bearing, 6200-2RS	SEES-BRG-R12	Bearing, R12-2RS
		SEES-BRG-R4	Bearing, R4-2RS

S.E.E.S. #	Description
SEES-BRG-6203NR	Bearing, 6203-2RSNR with Retaining Ring
SEES-BRG-6202NR	Bearing, 6202-2RSNR with Retaining Ring
SEES-BRG-99502HNR	Bearing, 99502HNR with Retaining Ring

Slide Guides

S.E.E.S. #	O.E.M. #	Description
ASCH-001-4		Slide Guide for ACSH-001
DDO-2	9838685	Slide Insert for DDO-21 assembly 2-1/2" L x 3/4" W
DDO-13	9805266, 10526	IVO Slide Guide Shoe, 5-1/2" x 1", 3-1/2" c/c mtg., used with DDO-13C Holder
DDO-21	9838697, 63869	Slide Assembly Complete
DDO-21A		Bracket and Bearing for slide assy DDO-21
DDO-21B	9806623	Slide Holder for DDO-21 assembly
DDO-44	9787768, 108768	Slide Guide, IVO "L" Shape
GGG-001		General Guide Shoe Insert, 15# Rail 5.625" L x 1" W
KM-001	KM-433371H29	Shoe Insert, folding slide
MIS-152		Nylon Gib, long wearing, self lubricating. 8-1/2" L x 1-11/16" W x 1-1/2" H, Slot: 1" D x 5/8" W
MIS-233	8S	Guide Shoe Assembly, Esco fixed, 5/8" rail with insert
MIS-233A	8ST	Slide Guide, Stile Style, Mount Fixed, 5/8" rail
MIS-233B	815DS	Slide Guide Assy, Double Swvlv Self Aligning, 10,000 Lbs Cap
MIS-233C	816DS	Slide Guide Assy, Double Swvlv Self Aligning, 10,000 Lbs Cap
MIS-233D	815SS	Slide Guide Assy, Single Swvlv Self Aligning, 8,000 Lbs Cap
MIS-233E	816SS	Slide Guide Assy, Single Swvlv Self Aligning, 10,000 Lbs Cap
MIS-233F		Guide Shoe Insert, 5-7/8" x 1-11/64 x 63/64, M10 x 1.5
MIS-233G		Guide Shoe Insert, 5/8" Rail, 6.25" L x 1.50" W x 1.625" with lip
MIS-233H	18FR	Freight Duty Fixed Guide Assembly, for 3/4" Rail
MIS-233J		Guide Shoe Insert, 1-3/8" x 1-3/8" x 9" L for 5/8" Rail
MIS-233K	30SS	Guide Shoe, Freight Duty 1.25" Rail
MIS-233L	16SS	Guide, Slide 20K/Car SS 3 x 5.5 Mount
ODO-79D	380CE1	Insert, Slide Guide 6 Knob Folding Type
SEES-HL-001G		Replacement Slide Guides for SEES Home Lift